



COMMUNITY
ACCEPT
ENCOURAGE
ACHIEVE



Centre Academy East Anglia Newsletter

Spring Term March 2023

"Spring adds new life and new joy to all that is" by Jessica Harleston

Dear Parent/Carers,

As we reach the end of another busy term we have seen and celebrated many achievements throughout school.

This term has seen the Head Teachers Award be presented to Elena, Daniel H, and Tommy W congratulations to them all. They all will be entered into the Head Teachers Award at the end of this academic year.

Breakfast club is now open and busy, it is being managed by Miss Banham and is a huge success, at times I have even seen staff popping in for their piece of toast!

All our clubs have had good student participation and we are ready to introduce new clubs for our return after the Easter holiday.

Our Duke of Edinburgh students have been out on their practise walk and had a great time, experiencing all weather conditions in one day; snow, rain, wind and even some sunshine!

Matilda rehearsals are going well and on many a day I can hear them from my office practising. Such dedication and effort from all are amazing and I looking forward to seeing the production.

The GCSE mocks went ahead and the results from our students have been great, so they are now revising ready for the real thing.

To enhance our communication with parent/carers I would like to invite you to our first Parent Open Forum on Thursday 20th April @ 5.30 which will be held in our school hall. This will give you an opportunity to meet the schools Proprietor and Senior Management Team and ask any questions you have. It is very important that your voice is heard and together we can ensure that we give our children/students the education they deserve in a safe, happy environment.

I do hope that you can join us.

As the Summer term approaches, we are preparing for lots of activities and enjoyable times ahead.

I would like to wish everyone a wonderful Easter break.

Yours faithfully

A handwritten signature in black ink that reads 'Lisa Gilbert'.

Lisa Gilbert
Head of School

TOP 10 TIPS FOR REVISION

START EARLY

No, we're not talking about setting the alarm for 5am. Start in February, so you're not pulling all-nighters the week before your exams.

QUIET PLEASE!

Irritating siblings driving you up the wall and away from your studies? Get Mum or Dad to lay the law down so you can revise without distractions.

FIND MEMORABLE WAYS TO REMEMBER THINGS



Henry Eight had six mates. He went to heaven in 1547. Then it was Liz who did the biz, And in 1603 she was RIP.

TEAMWORK WORKS



There's no 'i' in team (even though there are two in revision). Anyway, revising with a friend can make it easier to stick to a regular schedule.

DON'T FALL IN LOVE



It's hard to think about the Napoleonic Wars with a new worldie on your mind. For just a few months, don't listen to your heart, listen to your teachers.

WORK NOW, PLAY LATER



Despite sharing the same last three letters, procrastination and revision don't go well together. Work ASAP, so you can relax later without guilt.

TAKE BREAKS



If that's all you do, you're heading for trouble. But if you've been studying for an hour and your concentration starts to wander, it's time you did too.

MAKE REVISION REWARDING



Do what you don't like (revision), then do what you do like (gaming, socialising and telling mates you haven't even started revising yet).

LISTEN TO YOUR BODY CLOCK




Night owl or morning person? (If you're not one, morning people are harder to like than Mondays). Revise when you have most energy.

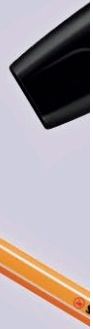
MAKE THINGS MORE COLOURFUL



Looking at a wall of words in blue or black ink is enough to make anyone see red. Different colours make revision notes memorable.

#MAKE YOUR MARK

REVISE WITH 



Exam Timetable 2023

Title	Exam Code	Duration (+25% extra)	Date	Time
Drama	8261/W	1hr 45m	Monday 15 th May	1PM
Science: Paper 1 (Environmental Sciences)	8465/1F/H	1hr 45m	Tuesday 16 th May	9AM
English Literature (Shakespeare and post-1914 Literature)	1ET0/01	1hr 45m	Wednesday 17 th May	9AM
History (WWI & Germany)	8145/1B/A 8145/1A/B	2 hr	Thursday 18 th May	9AM
Maths (Calculator)	J560/01/04	1hr 30m	Friday 19 th May	9AM
Geography (Physical Geography)	8035/1	1hr 30m	Monday 22 nd May	1PM
Religious Studies (Short Course)	8061/2/4 8062/5	1hr 45m	Tuesday 23 rd May	1PM
English Literature: 19 th Century Novel & Poetry since 1789	1ET0/02	2hr 15m	Wednesday 24 th May	9AM
Science: Paper 2 (Environmental Sciences)	8465/2F/H	1hr 45m	Thursday 25 th May	9AM
English Language: (Fiction/Imaginative Writing)	1EN0/01	1hr 45m	Monday 5 th June	9AM
Maths (Non-Calculator)	J560/02/05	1hr 30m	Wednesday 7 th June	9AM
History (Migration & Normans)	8145/2A/C 8145/2B/A	2hr	Wednesday 7 th June	1PM
Further Maths: Paper 1	8365/1	1hr 45m	Thursday 8 th June	9AM
Geography (Human Geography)	8035/2	1hr 30m	Friday 9 th June	9AM
Science: Paper 3 (Physical Sciences)	8465/3F/H	1hr 45m	Friday 9 th June	1PM
English Language (Non-Fiction/Transactional writing)	1EN0/02	2hr 5m	Monday 12 th June	9AM
Science: Paper 4 (Physical Sciences)	8465/4F/H	1hr 45m	Tuesday 13 th June	9AM
Maths (Calculator)	J560/03/06	1hr 30m	Wednesday 14 th June	9AM
Geography (Geographical Applications)	8035/3	1hr 15m	Friday 16 th June	1PM
Further Maths: Paper 2	8365/2	1hr 45m	Wednesday 21 st June	1PM

You will need to be at the main exam room 10 minutes before the start time

Spring by 4KB

We love spring because...

Joyful new lambs are born in spring.

And so are ducklings as delicate as glass.

New-born chicks are fluffy, playful, and exciting.

Graceful butterflies shyly swoop and flutter through the fragile buds and

blossoms cheerfully glistening in the beautiful summer sun's shimmer.

Blossoms as breath-taking as a butterfly slowly drift to the ground, making a

pretty pink carpet.

Snowdrops clump together like a huddle of white baby bunnies.

The sunny daffodils are blooming slowly, bowing their yellow heads in the breeze.

We love the spring.



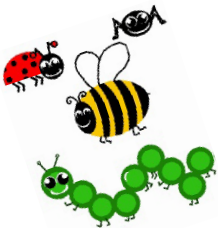


Participants of the D of E completed a practice day on Tuesday 14 March, this is what they had to say:

'We arrived at the campsite via minibus and were shown around by our assessors, Ms Martin and Mrs Whall. Ozzy and Xander were well liked by the sheep as they came right up to them at one point.

We began walking at first on a road and then by footpath. On the road, we had to be careful of cars, but on the footpath, we could relax and chat. Halfway through we were lucky to have some good weather for lunch. Several students cooked things using a 'Kelly Kettle' that Mrs Whall kindly provided. On the walk back, it began

to rain with high winds. Needless to say, we were not happy! All in all, a good trip with great teamwork from all.'



The Bug Club



Let me introduce myself: I am Mrs Appleby and I work with the students during break and lunch times, and I am excited to announce that with the help from the students we are going to grow a meadow.

We have started a bit late so there is lots of work sowing seeds and planting plugs. We are hoping to encourage bugs and butterflies and even birds and bats.

One of the students suggested we call the group 'The Bug Club' and it seems to be an appropriate name for us.

We will have a table and chair and a bench so the students can sit and identify different species, we hope to collect a library of pictures that we will be able to display and publish in future newsletters.

At the end of the season, we are hoping to collect and sell our own CAEA Seed Collection, all proceeds will be donated to a charity.

Behind the door in PSHE and Social Skills

As parents and carers, you may be curious to know what happens in our PSHE and Social Skills. If you're anything like me, it wasn't something that was taught when you were in school (at least explicitly!).

SOCIAL SKILLS

In January, all students started 'Social Squad' which is a program developed by a Speech and Language Therapist, mostly using short videos as a prompt to discuss a variety of social situations. Whilst the sometimes-dramatic videos can elicit a bit of humour, it is providing us lots of opportunities to discuss how we interpret different social situations, focusing on what went right, wrong and what can be done differently. These past two months our focus has been on reading facial expressions and sarcasm.

PSHE (Personal, Social, Health and Economic Education)

Schools can term these studies under a few terms, i.e., 'Life Skills', 'Personal Development', and they cover a huge amount of learning, which is required under the Department of Education (i.e., Relationship and Health Education). Aside from it being a statutory part of young people's education, I personally think it is incredibly important, and feel immensely proud to play a role in your young person's growth. Having classes sit around our boardroom table and explore key topics is really dynamic and productive.

This term, the overarching theme has been 'Relationships'. For our older students this has led us to more sensitive topics within intimate relationships, and I am pleased to say how respectful CAEA young people are. We often hear a lot of negative press about teenagers, but as a whole, what I see are considerate and thoughtful young people who understand their responsibilities to both themselves and the world around them. We have also explored discrimination, stereotypes, healthy vs unhealthy relationships and different types of relationships within these and lower year groups.

So far this year we have had two visits into the school to enhance our PSHE: a Teenage Mental Health Toolkit (2.5hrs) by Suffolk Mind and 1.5hr workshops by Drugline Education. It was wonderful to see the students engage in these workshops and great feedback was received. We are looking forward to welcoming visitors from Young Carers later this month.

'PSHE helps to promote child wellbeing, helping to keep children safe from harm by encouraging them to make informed choices. With the right learning provision and tools, these subjects can be taught in a safe environment and provide solid foundations to children of all ages. This enables and empowers children to understand what is right and wrong in any complicated situations they face, now, and in the future. Ultimately, PSHE helps ensure that children are safe, happy and healthy, by allowing them to understand when they may not be.' (Jan Lever, 2016)

As a parent and teacher, I implore you to keep those communication channels open, be curious and open. Use those car journeys, TV ad breaks (etc) to chat about their opinions, find answers together. They often know a lot more than we think or have misconceptions which can be harmful to either themselves or the world around them. As adults, we want to ensure that they have the facts, and the skills to discern information.

I wish you all a restful Easter Break!

Mrs Michelle Brown



Panathlon Swimming Gala

On Friday 10th March 7 intrepid students set off amongst a blizzard looking to reclaim the Panathlon Swimming Gala trophy that the school won last year. Once again, we were to compete at Crown Pools in Ipswich against 8 other teams. We competed in a range of events from 25 metres, to relays to treasure hunts and raft races.

The students performed exceptionally well, with each student winning at least one of their races. Unfortunately, despite our best efforts the trophy alluded us this year, but a commendable 4th placed finish (there is always next year!) was the reward for all the hard work the students put in. Well done to everyone who competed and represented the school so well!



Mr Steward
Teacher

1MC Drama News

As a requirement of their GCSE exam, Drama students in 1MC went to The Playhouse in Norwich in February to see Godber's adaptation of his comedy, 'Teechers Leavers '22'. This award nominated Blackeyed Theatre production is on tour to the Theatre Royal, Bury St Edmunds, where students will see the play for a second time, on 4th May, as revision for analysis and evaluation of a live theatre performance, for their written exam on 15th May. Students will have completed 60% of their GCSE exam by the end of this term, having just produced their own piece of live theatre, with performances of extracts from "The Importance of Being Earnest", to an external AQA examiner. They have done Oscar Wilde proud, and Ms Coleman and I could not be more proud of them. [We took the relaxing historic river walk from Norwich station when we visited the Playhouse back in February.]



Mrs Simpson
Teacher



Theatre Trip to Thurston Community College's Production of High School Musical

A little while ago now 5SWr and the cast of Matilda Jr set off to TCC for their annual trip to see their latest musical production. Each year we are privileged to be invited to a special preview showing of TCC's school production. This year it was High School Musical.

TCC always put on a very high standard of show and this year was no exception. The cast had clearly worked very hard, with this year including a live student band! Students at CAEA all commented on how much they enjoyed the production. It was an all singing, all dancing success with a great stage set and costumes to boot!

Our students didn't stop talking about the show all the way back to CAEA, with one bus (the one with Mrs Groombridge on) even singing their own rendition of "We're all in this together", because the tune was just so catchy and joyful to sing.

We are already looking forward to TCC's next school production, whatever that may be!

Mrs Groombridge



Pro Corda Workshop Visit to Centre Academy East Anglia:

This half term we were delighted to partner with Pro Corda and their schools outreach programme 'Create Together' specially designed to cater for pupils with SEND or additional needs.

Pro Corda is a youth music organisation that delivers high quality music education nationally, with their HQ based in Leiston Abbey. Pro Corda aims to equip every young person with the necessary skills to work together with others through music and performance. 'Its mission is to develop the person alongside the musician while offering world class training'.

In addition to this, Pro Corda has pioneered the innovative programme, 'Create Together'. 'Create Together' is a nationally leading holistic music education programme that focus on activities which develop leadership and responsibility through communication and creativity to build confidence and self-esteem.

Andrew and Laura, from Pro Corda, visited CAEA on Wednesday 22nd February. Students were treated to a snapshot workshop in their tutor groups that took us on a musical journey, exploring musical characters from Disney's The Lion King through some West African drumming, Piano Improvisation and a vocal performance.

The students really got involved and both Andrew and Laura were very impressed with their enthusiasm and commitment. One of our groups workshop even turned in to a very interesting in depth discussion about the music industry and how to market a show in the West End. It was clear that Pro Corda went above and beyond to meet the needs of our students to ensure they had an engaging and insightful experience with them.

I'm delighted to say that Pro Corda will be back during activities week, this time for a full day's worth of performing arts activities. I will be working closely with Andrew and Laura to develop a programme that is going to excite and appeal to our students, so watch this space!

Mrs Groombridge



News from our Kitchen Staff

In the kitchen we are listening to our students. We have attended Student Council Meetings and are continually checking our supplies are quality products from reputable providers.



We offer baguettes, wraps and sandwiches of the day as well as occasional pre order specials.



We endeavour to meet the needs of our student's by providing vegan, vegetarian, gluten-free meals, also meat and fish options.



If you would like any more information please do contact the kitchen team.



Mon 17 Apr 23	Term Commences
Mon 1 May 23	Bank Holiday
Thu 20 Apr 23	Parent Forum – 5.30pm
Mon 8 May 23	Bank Holiday
Fri 26 May 23	School finishes at 2.00pm for half term break
Mon 5 June 23	Term Commences
Wed 21 June 23	Parent Meetings – 2.00 – 4.00pm
Thu 29 June 23	Matilda - School Matinee – 2.00pm Evening Performance – 7.00pm
Fri 30 June 23	Inset Day – School closed to students
Sun 2 July 23	Prize Day and Graduation – 12.30pm
Mon 3 – Fri 7 July 23	Activities Week
Fri 7 July 23	Sports Day 1.00 – 3.00pm
Fri 7 July 23	Term Ends - School Finishes - 3.00 pm

Spring Term 2023

Inset Day – Friday 6 January 2023

Term Commences: Monday 9 January 2023

Half Term:

Friday 10 February 2023 (After School) **School Finishes at 12.00pm** (Teachers Inset – 1.00pm – 3.00pm)

Term Commences: Monday 20 February 2023

Term Ends: Friday 24 March 2023 (After School) **School Finishes at 3.00pm**

Summer Term 2023

Inset Day – Friday 14 April 2023

Term Commences: Monday 17 April 2023

Half Term:

Friday 26 May 2023 (After School) **School finishes at 12.00pm** (Teachers Inset – 1.00pm – 3.00pm)

Term Commences: Monday 5 June 2023

Term Ends: Friday 7 July 2023 (After School) **School finishes at 3.00pm**

Easter Bank Holidays:

Good Friday – 7th April 2023

Easter Monday – 10th April 2023

May Bank Holidays:

Monday 1st May 2023

Monday 8th May 2023

Monday 29th May 2023



General Information	Medical Information
<p>START OF THE SCHOOL DAY</p> <p>Please remember that students are not to be dropped off at the school before 8.10 am. Prior to that staff are not in their places and we cannot therefore ensure the students security.</p>	<ul style="list-style-type: none"> ✓ If you child requires any medication, please ensure that this is handed into the office or the Medication Team. Medication will need to be in its original packet along with the relevant paperwork. The item must be clearly labelled with the student's name and the instructions of administration. ✓ Students must not be sent to school if they have a fever/sickness or are feeling ill. Students should be fever/sickness free for 48 hours before returning to school to protect other students from contact with potentially contagious illnesses. Parents will be contacted by the medical staff on duty if a child shows symptoms of illness while in school. ✓ If the illness is more than 5 school days, we require a Doctor's Certificate.
<p>UNIFORM</p> <p>Please remember that all uniform and casual clothes must have the student's name in, as we do collect a significant amount of lost property.</p>	
<p>OUTDOOR CLOTHING</p> <p>During the cold months please could all students have winter clothing: wellies, coats, hats and gloves. During the summer months, please could students have a hat and sun cream.</p>	
<p>School Phone Number: 01449 736404 Out of hours emergency school mobile number 07555 641 724 email: admin-ea@centreacademy.co.uk</p>	
<p>Absence</p> <p>Please could all medical appointments/absences be reported before 9.00 am to the School Office. Please contact the school each day your child is absent; contact by email is fine.</p>	