



COMMUNITY  
ACCEPT  
ENCOURAGE  
ACHIEVE



# Centre Academy East Anglia Newsletter

Summer Term May 2023

Dear Parent/Carers,

We have had a whole half term in school and just starting to see some good weather. It is good to see students accessing outside learning.

It has been an action-packed term with lots of learning and rehearsals for Matilda.

We have had some lovely visitors and the students really enjoyed their visit from a Paediatric Specialist Dentist, J Smallbridge based in Ipswich. We all learned a lot of vital information to protect our teeth.

This half term has been my pleasure in handing out two Head Teachers Awards. Congratulations to both students for outstanding effort.

This year we are introducing a Transition Day for all our students, this will take place on Thursday 22<sup>nd</sup> June. Students will have the opportunity to experience new teachers, new classrooms and a new timetable for this September.

Please note the dates for the diary on the last page regarding events until the end of the Summer Term as we do have some changes.

Wishing you all a restful half term.

Yours faithfully

A handwritten signature in cursive script, appearing to read 'Lisa Gilbert'.

Lisa Gilbert  
Head of School



## Exam Timetable 2023

Title	Exam Code	Duration (+25% extra)	Date	Time
English Language: (Fiction/Imaginative Writing)	1EN0/01	1hr 45m	Monday 5 <sup>th</sup> June	9AM
Maths (Non-Calculator)	J560/02/05	1hr 30m	Wednesday 7 <sup>th</sup> June	9AM
History (Migration & Normans)	8145/2A/C 8145/2B/A	2hr	Wednesday 7 <sup>th</sup> June	1PM
Further Maths: Paper 1	8365/1	1hr 45m	Thursday 8 <sup>th</sup> June	9AM
Geography (Human Geography)	8035/2	1hr 30m	Friday 9 <sup>th</sup> June	9AM
Science: Paper 3 (Physical Sciences)	8465/3F/H	1hr 45m	Friday 9 <sup>th</sup> June	1PM
English Language (Non-Fiction/Transactional writing)	1EN0/02	2hr 5m	Monday 12 <sup>th</sup> June	9AM
Science: Paper 4 (Physical Sciences)	8465/4F/H	1hr 45m	Tuesday 13 <sup>th</sup> June	9AM
Maths (Calculator)	J560/03/06	1hr 30m	Wednesday 14 <sup>th</sup> June	9AM
Geography (Geographical Applications)	8035/3	1hr 15m	Friday 16 <sup>th</sup> June	1PM
Further Maths: Paper 2	8365/2	1hr 45m	Wednesday 21 <sup>st</sup> June	1PM

You will need to be at the main exam room 10 minutes before the start time



On Friday 5<sup>th</sup> May the school celebrated the coronation of King Charles III. All students and staff enjoyed a special assembly and selling cakes. All proceeds will be donated to the Prince of Wales Trust.

Students also sent the King a poster and letter.



## What's On in...

### SOCIAL SKILLS

'When you talk, you are only repeating something you know. But if you listen, you may learn something new'

The Dalai Lama

This term we have started off on 'Conversational Strategies'. As I am sure we all know, conversation is what helps us connect to other people both socially and professionally. Being able to recognise cues from a conversational partner can be a challenge for many of us, so taking time to observe scenarios taking place has been really useful; watching out for whether a partner may be bored or confused, or perhaps too busy to engage in conversation. Within this topic of conversation, we will also look at making bids for a conversation (i.e., appropriate starters) and how you may enter and exit a conversation. Recognising that genuine listening, rather than talking is the one of the most useful skills we can develop.



### PSHE

In the Spring term we had the overall Theme of 'Relationships'. As this is such a broad and important subject, and with a lot of statutory content, some of our classes are still working on lessons where significant gaps have been observed. Being a small school means that we can be quite flexible to suit the needs of our students; for example, in Key Stage 3 and 4 addressing myths and stigma around menstruation, and correcting understanding of personal anatomy. This ultimately aims to keep young people safe and to respect and understand their peers. Whilst at times the class discussion could be limited, with encouragement to participate, the students developed their understanding of their own, and other bodies. We were also able to look at global misconceptions and inequalities, around subjects such as menstruation, which broadened their empathy, and gave us a chance to discuss opportunities to progress equality. We have moved on to the theme of 'Living in the Wider World' for all classes, which includes topics on Financial Literacy, Personal Development and British Values.

In light of recent news events surrounding controversial teaching practises of Relationship and Sex Education, we want to reassure parents and carers regarding our use of external visitors to the school particularly when delivering sensitive subjects. Visitors who are vetted in line with school safeguarding policy are only used to enhance the curriculum we deliver, providing expertise to topics, and are vetted, with lessons checked in advance for suitability. As staff, we take pride in knowing our young people and communicate in advance any sensitivities. If concerns are raised within the school community, we can work to incorporate it into the teaching, and this extends to outside of school. As a parent or carer, we welcome your interest, questions and/or involvement in this vital part of their education.

I also wanted to draw your attention to our Relationship and Sex Education Policy. This important document should help to guide you what is covered within the theme of Relationships, our aims as a school and how you as a parent or carer can be involved. <https://www.centreacademy.net/wp-content/uploads/2022/10/CAEA-RSE-policy.pdf>

### SUGGESTED LISTENING

As a PSHE teacher, I have been following BBC4's programme 'Bringing up Britain' lately and found it a useful listen, both as a teacher and a parent. Each episode focuses on one big parenting question, such as adolescent relationships, friend or parent and discussing sensitive subjects with your child. It is great to listen to other parent's views, and professional opinions/guidance.

Listen live on Wednesday at 8pm, or you can listen back on BBC sounds:

<https://www.bbc.co.uk/programmes/b00jj0s5>

Mrs Brown



## UAS

The Unit Award Scheme students have grown to appreciate that all life is History in the making. This has given them a greater appreciation of current events, such as the Coronation of King Charles III. They enjoyed watching highlights of the late Queen's coronation in 1953 and were amazed to learn facts, such as, Westminster Abbey has been used for Coronations since the time of William the Conqueror (1066) and that the wood of the carriage carrying the King to his Coronation comes from significant ships and castles covered in gold leaf. They were quite shocked to realise how much it was costing to stage the Coronation and we discussed how people may have different opinions of the value of such an event.



Overall, the class decided that they were keen to witness this historic event and were happy to celebrate it by creating this amazing piece of artwork, created by joining together 32 separate colouring sheets.

UAS Class  
Ms Martin



This Summer term has the CAEA DofE group in full swing, preparing for our final Bronze Expedition in the last week before the summer half term. In our weekly sessions students have been working together to design their group activity and have been organising the individual job allocations that will be needed. We have revisited map work and first aid skills. In addition, all students have been collecting evidence for their three sections for Volunteering, Skills and Physical.



We had the great opportunity to practice our camping skills and camping out on the school field where students practiced both putting up their tents and cooking on an open fire. The school has purchased several new rucksacks for the group to use in addition to two new tents.

Both Miss Martin and Mrs Whall have been out on location checking the route and completing risk assessments. As such we hope that we are ALL ready for the BIG ADVENTURE!



# CAEA Equipment Provision

At CAEA, we promote our students to be as independent and organised as possible, however, appreciate that students may find this challenging for a variety of reasons. We therefore place measures to support with this, such as providing school bag checklists to pupils, so they can manage their routine with confidence. We also have posters displayed around the school and in all tutor rooms to encourage responsibility for equipment, much like the one shown below!

Students are welcome to bring in stationery from home and are encouraged to bring a pencil case which they can carry with them. If your child brings any stationery from home, please can you ensure that scissors are plastic and in line with those provided by the school. Please be assured that the school has scissors available for all students, as well as stationery resources for those who may need them. Specialist scissors are also available from the Occupational Therapist if students are struggling to use the ones available in class.



*Example of scissors available in school*



*Example of specialist scissors available*



Thank you very much for your cooperation!



## Art Trip – 11 May 2023

On the 11<sup>th</sup> May, students from American Diploma, 1MC and 3AG visited the Sainsbury Centre for Visual Arts at the UEA in Norwich to participate in an Artist workshop called 'Moore and More' and see the Exhibition 'Empowering Art'.

The group were given the opportunity to work with renowned artist Ian Brownlie to study the work of famous sculptor Henry Moore. Students were introduced to several of his sculptures inside and outside of the centre and discussed his techniques and influences before producing some 'Speed' art depictions. Following this, Ian led a workshop for the students to produce their own sculptures using plaster, soap and potatoes! Under his guidance students experimented with using different tools and cutting techniques to create their own Henry Moore representations.



The artist workshop also provided a chance to explore the connections between Moore's work and World art through Meso-American objects carved from stone. This linked perfectly to the current exhibition, 'Empowering Art' which is a ground-breaking collection of rich but rarely seen Indigenous artworks, bringing together exceptional contemporary and historical pieces from across the Northwest Coast of North America.

Overall, it was a great day for the students who were able to explore and discover new art works contextualising different cultural influences.

A big thank you to Mr Craddock for driving the minibus.

Mr Lloyd





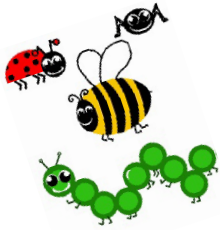
## Castle Acre Trip

As part of the GCSE History programme our students in Year 11 study the Norman Conquest of England. As part of our studies, we look at how the Normans controlled England and the impact that they had on the church. Castle Acre in Norfolk gives the perfect opportunity to study both of these as the village has both castle ruins and the remains of the Norman abbey. On 19<sup>th</sup> April we headed off to explore both sites and spent the day getting to grips with the scale of the Norman buildings, and the effect it would have had on the English that lived alongside both complexes. A lot of fun, and some learning, took place as we studied and discussed the impact of the Normans on several aspects of life in England.

Mr Steward  
History Teacher







# The Bug Club



This month's update from The Bug Club:

After spending hours over the Easter holidays clearing the grass from the space that is going to be the meadow. I am pleased to report that the millions of seeds scattered by me, and the children have started to show their heads. It is not going to look its best for a few years however the beginnings are looking good.



The Horse Box Trailer seems to be a success and we have added a picnic table where we sit and sketch wildlife on sunny days. We have added guttering around the allotment area and sewn salad leaves.



That has also worked as they will be ready in about a weeks' time. (Also, much to the rabbit's disgust they cannot reach the juicy lettuces).

Some of the children have helped me to weed the secret garden and said how much they love the flowers making me smile.

The Bug Club





# CAEA Geography

As part of the AQA GCSE Geography course our students study the ecology and structure of a Tropical Rainforest, the causes of deforestation and its impacts.

Over the Easter Holiday we set our students a challenge, to create a 3d Model showing the physical layers within the forest structure and a request to share information on how both plants and animals are adapted to the hot and humid conditions.

**Well!** our students did not disappoint, and we had seven beautiful and detailed 3d Models presented to staff. Each model was given a number and staff voted for their favourite. Mrs Gilbert then had the honour of presenting all participants with a certificate of completion and a small prize within our weekly church celebration assembly.

Well done to all those who took part your effort and understanding of Tropical Rainforests was clear for all to see.

Mrs Whall

## Geography Teacher





## Good School Attendance Guide

Attendance is incredibly important for a child's learning, but it is not always easy to motivate certain young people to attend as regularly as they should. We know it has been especially hard for some students to re-establish a routine after the disruption of the pandemic.

CAEA are keen to make sure that every child has as much access to learning as possible, so they meet their potential and we support parents and carers simultaneously.

Good School attendance habits are best started early. Children learn from those around them and you as parents set the standards and expectations for your child. Showing your child, the importance of attending school every day not only helps your child to settle quickly when starting school but helps them to keep and sustain friendships and enjoy the school environment.

We are here to support you; we understand the difficulties some parents can face and will work with you.

### ROUTINES

The easiest way to ensure your child attends school on time every day is to establish a

#### **GOOD EVENING AND MORNING ROUTINE**

If mornings are hectic in your household, prepare as much as possible the night before.

We want all children to have a positive experience of school life and be able to reach their full potential. One way in which parents can help their child to do this is by ensuring they attend school every day. Parents can often feel that more time is spent at school than at home.

## Did you Know!

If your child achieves 80% over their 5 years of education, they will miss an entire school year!

Approximate Days Absence in a School Year	
Attendance Rate	End of School Year
100%	0
95%	10 days
90%	20 days
85%	30 days
80%	40 days

As the parent you are responsible for ensuring that once your child is registered at a school that they attend regularly and punctually. Starting good habits earlier on is much easier than trying to change poor attendance habits, battling with your child to attend school and struggling to get out of the door on time. Be organised, have a plan, be consistent and involve your child.

School absence falls into one of two categories: Authorised, those which we can give you permission for and Unauthorised, those which we will not.

Examples of absences which we are unlikely to authorise can include:

- Sickness of a parent, or other family member
- Inadequate clothing for school
- Child being used as a carer.
- Problems with transport
- Non urgent medical treatment
- School refusal or truancy
- Days off for birthdays, shopping trips
- Family Holiday

The only person who can authorise an absence from school is the Head of School. If your child will be absent from school, you must notify us by 9.00am by telephone or an email. The Head of School will decide whether to authorise the absence, depending upon the reason given.

### **PERSISTENT ABSENCE**

The Government say that any child with attendance below 90%, regardless of the reason for the absence, is considered to be a persistent absentee. This equates to just 2 days each month.

#### **IS YOUR CHILD A PERSISTENT ABSENTEE?**

Statistics show that persistent absentees are less likely to achieve their full potential. This can affect GCSE grades, and a child's future prospects.

Most childhood sickness that prevents school attendance will be classed as authorised absence. However, if your child is frequently absent from school due to sickness, we can ask that you provide medical evidence, or we may have to stop authorising the absences. This does not mean that we do not believe you or your child, but we want to do the best for you by ensuring your child can attend school as much as possible and providing extra support such as accessing the school therapy team if needed.

As a parent you can help keep your child's level of absence down by sending them into school every day and arriving on time. The register will close at 9.00am, half an hour after the beginning of the start of the school day. Arriving after this time will mean your child is marked as having an unauthorised absence and this could lead to a fine being issued.

The Head of School can only grant a leave of absence for exceptional circumstances. As a rule, a family holiday or travelling abroad is not considered to be an exceptional reason.

If you need to request a Leave of Absence, please contact the school for a form to be completed and returned for the Head of School to consider.

### **Did you know?**

**10 MINS LATE EVERY DAY =**

**33 learning hours lost each year!**

**Can your child afford to miss out?**

- There is a link between good school attendance and high-level attainment.
- Regardless of the reason, if your child is absent from school it will impact on their learning.
- Parents/Carers are legally responsible for ensuring their child attends school on time every day.

### **PUNCTUALITY**

- It is important that your child attends school every day and on time.
  - Arriving late to school is unsettling for children.





Mon 5 June 23	Term Commences
Wed 21 June 23	Parent Meetings – 2.00 – 4.00pm
Thu 22 June 23	Student Transition Day
Thu 29 June 23	Matilda - School Matinee – 2.00pm Evening Performance – 7.00pm
Fri 30 June 23	Inset Day – School closed to students
Sun 2 July 23	Prize Day and Graduation – 1.30pm
Mon 3 – Fri 7 July 23	Activities Week
Fri 7 July 23	Sports Day 1.00 – 3.00pm
Fri 7 July 23	Term Ends - School Finishes - 3.00 pm

## Summer Term 2023

Term Commences: Monday 5 June 2023

Term Ends: Friday 7 July 2023 (After School) **School finishes at 3.00pm**



General Information	Medical Information
<b>START OF THE SCHOOL DAY</b>	<ul style="list-style-type: none"> <li>✓ If your child requires any medication, please ensure that this is handed into the office or the Medication Team. Medication will need to be in its original packet along with the relevant paperwork. The item must be clearly labelled with the student's name and the instructions of administration.</li> <li>✓ Students must not be sent to school if they have a fever/sickness or are feeling ill. Students should be fever/sickness free for 48 hours before returning to school to protect other students from contact with potentially contagious illnesses. Parents will be contacted by the medical staff on duty if a child shows symptoms of illness while in school.</li> <li>✓ If the illness is more than 5 school days, we require a Doctor's Certificate.</li> </ul>
Please remember that students are not to be dropped off at the school before 8.10 am. Prior to that staff are not in their places and we cannot therefore ensure the students' security.	
<b>UNIFORM</b>	
Please remember that all uniform and casual clothes must have the student's name in, as we do collect a significant amount of lost property.	
<b>OUTDOOR CLOTHING</b>	<b>Absence</b>
During the cold months please could all students have winter clothing: wellies, coats, hats and gloves. During the summer months, please could students have a hat and sun cream.	
School Phone Number: 01449 736404 Out of hours emergency school mobile number 07555 641 724 email: admin-ea@centreacademy.co.uk	Please could all medical appointments/absences be reported before 9.00 am to the School Office. Please contact the school each day your child is absent; contact by email is fine.